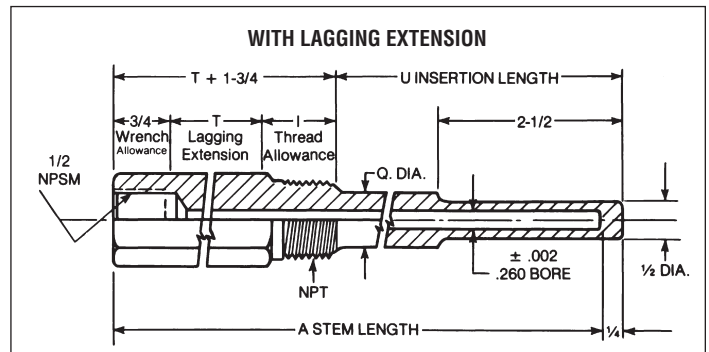
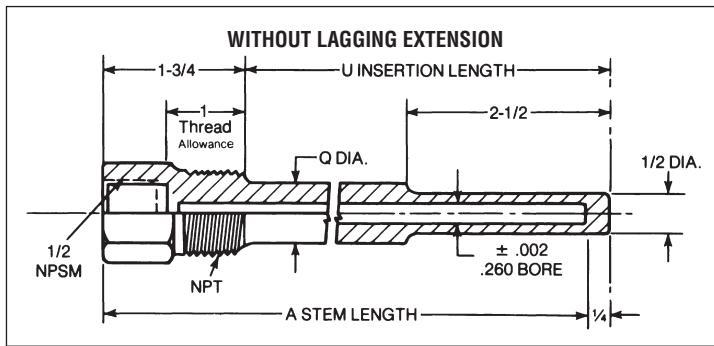


**FOR INDUSTRIAL BIMETAL THERMOMETERS WITH .250" DIAMETER ELEMENTS**

- .385" bore available for use with instruments with .375" diameter elements
- All Weksler standard thermowells are bored from solid bar stock



3/4 NPT – CATALOG NUMBERS						
A	U	Q	BRASS	STEEL	304 SS	316 SS
4	2 1/2	—	S3B4	S3S4	S3G4	S3J4
6	4 1/2	3/4	S3B6	S3S6	S3G6	S3J6
9	7 1/2	3/4	S3B9	S3S9	S3G9	S3J9
12	10 1/2	3/4	S3B2	S3S2	S3G2	S3J2
15	13 1/2	3/4	S3B5	S3S5	S3G5	S3J5
18	16 1/2	3/4	S3B8	S3S8	S3G8	S3J8
24	22 1/2	3/4	S3BT	S3ST	S3GT	S3JT

3/4 NPT – CATALOG NUMBERS							
A	U	T	Q	BRASS	304 STEEL	316 SS	SS
6	2 1/2	2	—	L3B6	L3S6	L3G6	L3J6
9	4 1/2	3	3/4	L3B9	L3S9	L3G9	L3J9
12	7 1/2	3	3/4	L3B2	L3S2	L3G2	L3J2
15	10 1/2	3	3/4	L3B5	L3S5	L3G5	L3J5
18	13 1/2	3	3/4	L3B8	L3S8	L3G8	L3J8
24	19 1/2	3	3/4	L3BT	L3ST	L3GT	L3JT

1 NPT – CATALOG NUMBERS						
A	U	Q	BRASS	STEEL	304 SS	316 SS
4	2 1/2	—	S4B4	S4S4	S4G4	S4J4
6	4 1/2	7/8	S4B6	S4S6	S4G6	S4J6
9	7 1/2	7/8	S4B9	S4S9	S4G9	S4J9
12	10 1/2	7/8	S4B2	S4S2	S4G2	S4J2
15	13 1/2	7/8	S4B5	S4S5	S4G5	S4J5
18	16 1/2	7/8	S4B8	S4S8	S4G8	S4J8
24	22 1/2	7/8	S4BT	S4ST	S4GT	S4JT

1 NPT – CATALOG NUMBERS							
A	U	T	Q	BRASS	304 STEEL	316 SS	SS
6	2 1/2	2	—	L4B6	L4S6	L4G6	L4J6
9	4 1/2	3	7/8	L4B9	L4S9	L4G9	L4J9
12	7 1/2	3	7/8	L4B2	L4S2	L4G2	L4J2
15	10 1/2	3	7/8	L4B5	L4S5	L4G5	L4J5
18	13 1/2	3	7/8	L4B8	L4S8	L4G8	L4J8
24	19 1/2	3	7/8	L4BT	L4ST	L4GT	L4JT

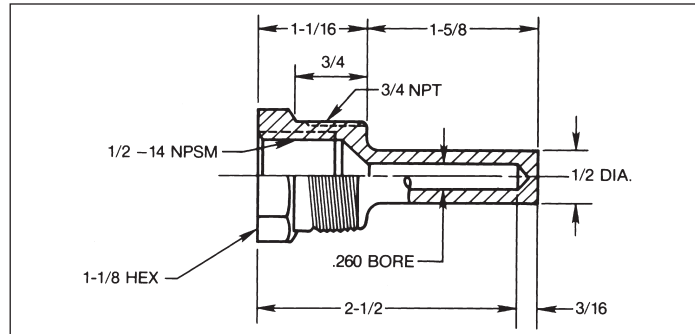
Brass wells are not recommended for installations involving high pressures and/or temperatures over 400°F. Brass cap and chain available to keep bore clean when not in use. .260" bore standard. If .385" bore is required:  
 (1) Add the letter K at the end of the catalog no.;  
 (2) "Q" diameter is changed to 49/64" along entire length of insertion ("U" dimension).  
 For pressure – temperature rating use Table 1 on page 89.

**NOTE: 2 1/2" STEM THERMOMETERS USE SPECIAL LIMITED SPACE WELLS.**

**LIMITED SPACE WELLS**

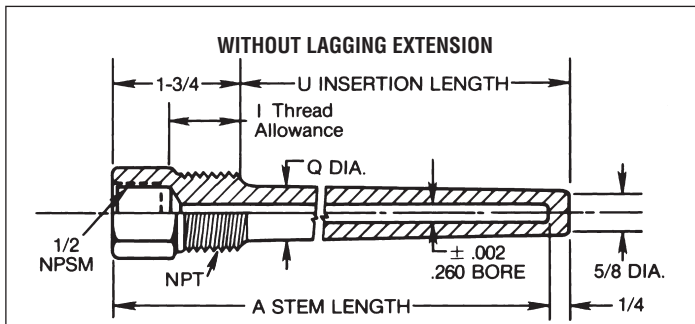
Fits Weksler 3" and 5" bimetal thermometers with 2½" stem length. It is recommended that these be used only when space is such a critical factor that wells for 4" stem length bi-metals cannot be utilized.

**IMPORTANT NOTE:** The above limited space thermowells should not be used with Weksler 3" or 5" bimetals with the following ranges: 25/125°F, -40/120°F, 0/150°F, 50/500°F, 150/750°F, 0/50°C, -50/50°C, 0/300°C and 100/400°C. These ranges must use thermometers with 4" minimum stem length.

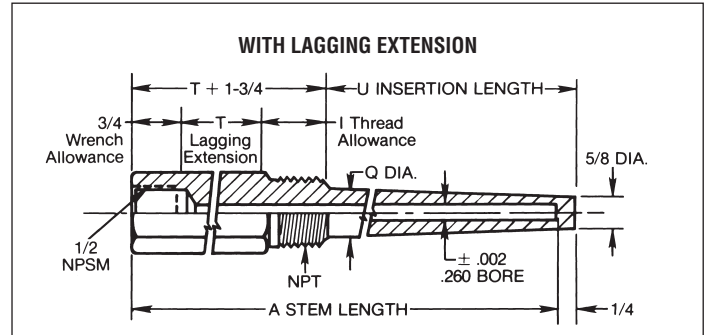

**CATALOG NUMBERS**

	BRASS	STEEL	304 SS	316 SS
3/4 NPT	S3B1	S3S1	S3G1	S3J1
1 NPT	S4B1	S4S1	S4G1	S4J1

Brass wells are not recommended for installations involving high pressures and/or temperatures over 400°F.

**HEAVY DUTY THREADED WELLS**

**¾ NPT – CATALOG NUMBERS**

A	U	Q	STEEL	304 SS	316 SS
4	2½	—	S3S4H	S3G4H	S3J4H
6	4½	⅞	S3S6H	S3G6H	S3J6H
9	7½	⅞	S3S9H	S3G9H	S3J9H
12	10½	⅞	S3S2H	S3G2H	S3J2H
15	13½	⅞	S3S5H	S3G5H	S3J5H
18	16½	⅞	S3S8H	S3G8H	S3J8H
24	22½	⅞	S3STH	S3GTH	S3JTH


**¾ NPT – CATALOG NUMBERS**

A	U	T	Q	STEEL	304 SS	316 SS
6	2½	2	⅞	L3S6H	L3G6H	L3J6H
9	4½	3	⅞	L3S9H	L3G9H	L3J9H
12	7½	3	⅞	L3S2H	L3G2H	L3J2H
15	10½	3	⅞	L3S5H	L3G5H	L3J5H
18	13½	3	⅞	L3S8H	L3G8H	L3J8H
24	19½	3	⅞	L3STH	L3GTH	L3JTH

**1 NPT – CATALOG NUMBERS**

A	U	Q	STEEL	304 SS	316 SS
4	2½	1⅙	S4S4H	S4G4H	S4J4H
6	4½	1⅙	S4S6H	S4G6H	S4J6H
9	7½	1⅙	S4S9H	S4G9H	S4J9H
12	10½	1⅙	S4S2H	S4G2H	S4J2H
15	13½	1⅙	S4S5H	S4G5H	S4J5H
18	16½	1⅙	S4S8H	S4G8H	S4J8H
24	22½	1⅙	S4STH	S4GTH	S4JTH

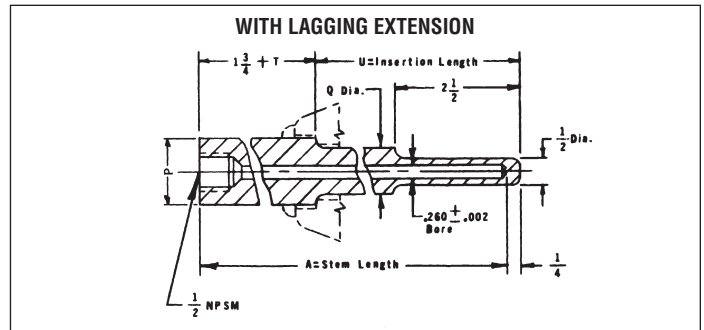
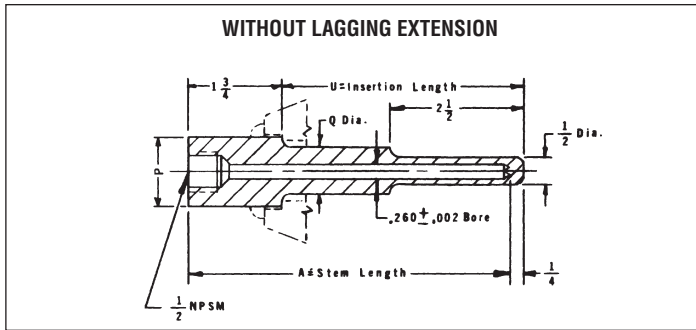
**1 NPT – CATALOG NUMBERS**

A	U	T	Q	STEEL	304 SS	316 SS
6	2½	2	1⅙	L4S6H	L4G6H	L4J6H
9	4½	3	1⅙	L4S9H	L4G9H	L4J9H
12	7½	3	1⅙	L4S2H	L4G2H	L4J2H
15	10½	3	1⅙	L4S5H	L4G5H	L4J5H
18	13½	3	1⅙	L4S8H	L4G8H	L4J8H
24	19½	3	1⅙	L4STH	L4GTH	L4JTH

Brass cap and chain available to keep bore clean when not in use.  
.260" bore standard. If .385" bore is required:

- (1) change the last digit of the catalog no. from H to L;
  - (2) "Q" diameter will be 1⅙" on all and diameter at the end of taper (bottom of well) will be 49/64".
- For pressure and temperature rating use Table 2 on page 89.

**NOTE: ALL WEKSLER STANDARD THERMOWELLS ARE BORED FROM SOLID BAR STOCK.**



**3/4 NPT – CATALOG NUMBERS**

A	U	Q	STEEL	304 SS	316 SS
4	2½	½	S5S4	S5G4	S5J4
6	4½	¾	S5S6	S5G6	S5J6
9	7½	¾	S5S9	S5G9	S5J9
12	10½	¾	S5S2	S5G2	S5J2
15	13½	¾	S5S5	S5G5	S5J5
18	16½	¾	S5S8	S5G8	S5J8
24	22½	¾	S5ST	S5GT	S5JT

**3/4 NPT – CATALOG NUMBERS**

A	U	T	Q	STEEL	304 SS	316 SS
6	2½	2	½	L5S6	L5G6	L5J6
9	4½	3	¾	L5S9	L5G9	L5J9
12	7½	3	¾	L5S2	L5G2	L5J2
15	10½	3	¾	L5S5	L5G5	L5J5
18	13½	3	¾	L5S8	L5G8	L5J8
24	19½	3	¾	L5ST	L5GT	L5JT

**1 NPT – CATALOG NUMBERS**

A	U	Q	STEEL	304 SS	316 SS
4	2½	½	S6S4	S6G4	S6J4
6	4½	¾	S6S6	S6G6	S6J6
9	7½	¾	S6S9	S6G9	S6J9
12	10½	¾	S6S2	S6G2	S6J2
15	13½	¾	S6S5	S6G5	S6J5
18	16½	¾	S6S8	S6G8	S6J8
24	22½	¾	S6ST	S6GT	S6JT

**1 NPT – CATALOG NUMBERS**

A	U	T	Q	STEEL	304 SS	316 SS
6	2½	2	½	L6S6	L6G6	L6J6
9	4½	3	¾	L6S9	L6G9	L6J9
12	7½	3	¾	L6S2	L6G2	L6J2
15	10½	3	¾	L6S5	L6G5	L6J5
18	13½	3	¾	L6S8	L6G8	L6J8
24	19½	3	¾	L6ST	L6GT	L6JT

<b>*NOMINAL PIPE SIZE ("P" DIMENSION)</b>
¾" Weld Connection = 1.050" Diameter
1" Weld Connection = 1.315" Diameter

Brass cap and chain available to keep bore clean when not in use.  
 .260" bore standard. If .385" bore is required:  
 (1) add the letter K to the end of the catalog no. ;  
 (2) "Q" dimension is changed to 49/64" along entire length of insertion ("U" dimension).  
 For pressure and temperature rating use Table below.  
**NOTE: ALL WEKSLER STANDARD THERMOWELLS ARE BORED FROM SOLID BAR STOCK.**

**PRESSURE-TEMPERATURE RATING  
 (LBS. PER SQ. INCH)**

**(Weld-in Type)**

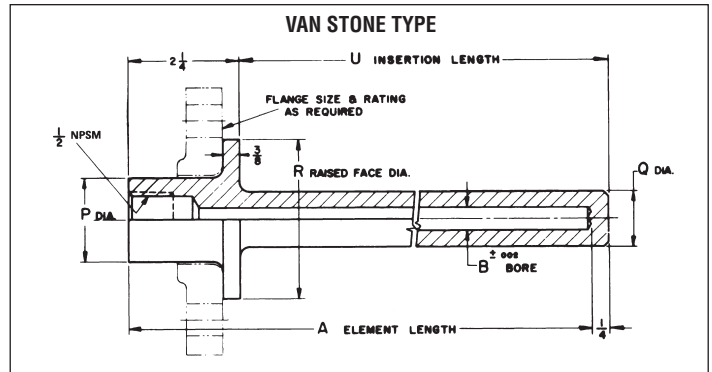
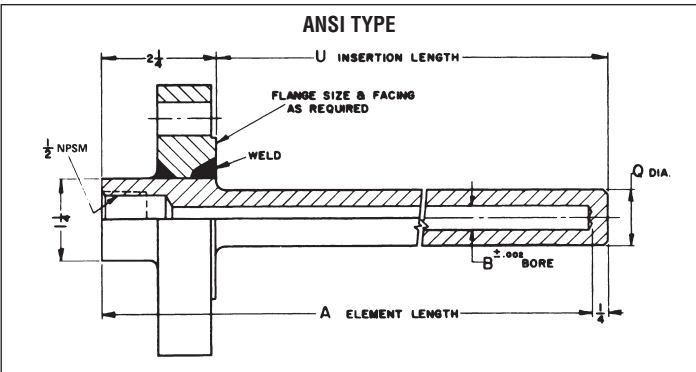
**(Heavy Duty Threaded)**

**TABLE 1**

MATERIAL	TEMPERATURE – °F						
	70°	200°	400°	600°	800°	1000°	1200°
Brass 5000	4200	1000	—	—	—	—	—
Carbon Steel	5200	5000	4800	4600	3500	1500	—
A.I.S.I.-304	7000	6200	5600	5400	5200	4500	1650
A.I.S.I.-316	7000	7000	6400	6200	6100	5100	2500
Monel 6500	6000	5400	5300	5200	1500	—	—

**TABLE 2**

MATERIAL	TEMPERATURE – °F						
	70°	200°	400°	600°	800°	1000°	1200°
Brass	5300	4250	1100	—	—	—	—
Carbon Steel	5950	5750	5450	5250	4000	1750	—
A.I.S.I.-304	7800	7050	6400	6150	6000	5190	1875
A.I.S.I.-316	7800	7800	7250	7100	6950	5800	2720
Monel	7450	6850	6150	6100	5940	1750	—



CATALOG NUMBERS					
ELEM. LGTH. A	INSERT. LGTH. U	SHANK DIA. Q	STEEL	304 SS	316 SS
4	2	3/4	FAS4	FAG4	FAJ4
6	4	3/4	FAS6	FAG6	FAJ6
9	7	3/4	FAS9	FAG9	FAJ9
12	10	3/4	FAS2	FAG2	FAJ2
15	13	3/4	FASA	FAG5	FAJ5
18	16	3/4	FAS8	FAG8	FAJ8
24	22	3/4	FAST	FAGT	FAJT

CATALOG NUMBERS					
ELEM. LGTH. A	INSERT. LGTH. U	SHANK DIA. Q	STEEL	304 SS	316 SS
4	2	3/4	VLS4	VLG4	VLJ4
6	4	3/4	VLS6	VLG6	VLJ6
9	7	3/4	VLS9	VLG9	VLJ9
12	10	3/4	VLS2	VLG2	VLJ2
15	13	3/4	VLVL	VLG5	VLJ5
18	16	3/4	VLS8	VLG8	VLJ8
24	22	3/4	VLST	VLGT	VLJT

ANSI flanged dwells are supplied as one unit with flange and well welded together.

**Note:** When ordering, specify flange size and rating as follows:

1" - 150 psi	1 1/2" - 150 psi	2" - 150 psi
1" - 300 psi	1 1/2" - 300 psi	2" - 300 psi
1" - 600 psi	1 1/2" - 600 psi	2" - 600 psi
1" - 1500 psi	1 1/2" - 1500 psi	2" - 1500 psi

RF (raised face) furnished as standard.

FF (flat face) optional at same price when specified.

RTJ (ring type joint) available at extra cost when specified.

Brass cap and chain available to keep bore clean when not in use.

.260" bore standard. If .385" bore is required:

- (1) add the letter K to the end of the catalog no.;
- (2) "Q" diameter is changed to 7/8" along the entire length of insertion ("U" dimension).

For pressure and temperature rating use Table 3 below.

Van stone type wells are intended for use with separate carbon steel backing flange (lap joint type).

**Note:** Backing flange not supplied unless requested. If required, specify flange size and ratings as follows:

1" - 150 psi	1 1/2" - 150 psi
1" - 300 psi	1 1/2" - 300 psi
1" - 600 psi	1 1/2" - 600 psi
1" - 1500 psi	1 1/2" - 1500 psi

**PRESSURE-TEMPERATURE RATING (Flanged Type)  
(LBS. PER SQ. INCH)**

MATERIAL	TEMPERATURE - °F						
	0°	200°	400°	600°	800°	1000°	1125°
Carbon Steel	_____	UP _____	TO _____	_____	2500#	_____	_____
A.I.S.I.-304	_____	UP _____	TO _____	_____	_____	2500#	_____
A.I.S.I.-316	_____	UP _____	TO _____	_____	_____	_____	2500#
Monel	_____	UP _____	TO _____	_____	2500#	_____	_____